

HOW TO MAKE A BRACELET

Starter Beading Kit:

Shell Pearl Beginners
Jewellery Kit
LOGC98

1 Cut 25cm (10 inches) of beading thread using your cutters. Feed on 1 x Teal Shell Pearl, 1 spacer bead/fancy jump ring, 1 x Teal Shell Pearl, 1 spacer bead/fancy jump ring, 1 x Teal Shell Pearl to make the centre or focal point of your bracelet.

Then on either side of the focal point add 1 x Silver Shell Pearl, 1 x White Shell Pearl, 1 x Silver Shell Pearl and 3 x Teal Shell Pearls. Repeat this

pattern until your bracelet reaches the required length for your wrist.

2 Choose a toggle clasp (Metal Hoop and T-Bar found in the findings pack) and using the flat nose and round nose pliers from the tool kit, twist open the central jump ring to release the hoop shaped half. Close the jumping again leaving it attached to the T-bar half of the clasp. Add another jumping to the small loop at the base of the hoop shaped half of the clasp

3 Working on one side of your bracelet feed a crimp bead (small metal tube found in the findings

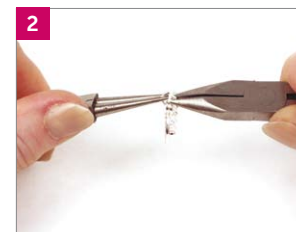
pack) onto the beading thread, then feed the thread through the jumping on one side of your clasp. Bend the thread over and pass it back through the crimp bead.

4 Using your flat nose pliers flatten the crimp to secure your clasp and trim the excess wire as close as possible to the crimp. Repeat step 3 on the other side of your bracelet using the remaining half of your clasp and pull the thread tight so that the beads and the clasp are as close as possible before flattening the crimp bead and trimming off the excess beading thread.



you will need

- Tool kit
- Threading pack
- Findings pack
- 3 strands of gemstones



HOW TO MAKE EARRINGS

Starter Beading Kit:

Shell Pearl Beginners
Jewellery Kit
LQGC98

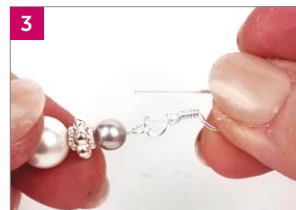
you will need

- Tool kit
- Threading pack
- Findings pack
- 3 strands of gemstones

1 Using a headpin (metal pin with a ball at the end found in the findings pack) feed on 1 x White Shell Pearl, 1 x spacer bead/fancy jump ring, and 1 x Silver Shell Pearl. Bend the head pin to one side and trim to 1cm in length using your

cutters from your tool kit.

2 Using your round nose pliers, clamp hold of the tip of the cut headpin and twist your wrist towards you to form a loop.



3 Use your flat nose pliers to open the loop on the base of the earring finding. Hook on your beaded design and close the loop, again using your flat nose pliers.

HOW TO MAKE A NECKLACE



Starter Beading Kit:

Shell Pearl Beginners
Jewellery Kit
LQGC98

you will need

- Tool kit
- Threading pack
- Findings pack
- 3 strands of gemstones



1



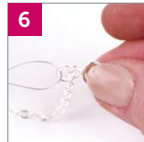
2



3



4



6



5



7

1 Cut 50cm (20inches) of beading thread using your cutters. Feed on 1 x White Shell Pearl, 1 x spacer bead/ fancy jump ring, 1 x White Shell Pearl, 1 spacer bead/fancy jump ring and finally 1 x White Shell Pearl to make the centre or 'focal point' of your necklace.

2 On each side of the focal point feed the following pattern of beads: 1 x Silver Shell Pearl, 1 x Teal Shell Pearl, 1 x Silver Shell Pearl and 3 x White Shell Pearls. Repeat this pattern until you reach the required length of your necklace.

3 Measure the final length of your necklace and using your cutters cut a length of chain 4cm (1 1/2 inches) shorter than it.

4 Choose a toggle clasp from your findings pack (Metal Hoop and T-Bar found in the findings pack) and using the flat nose and round nose pliers from the tool kit, twist open the central jumping ring to release the hoop shaped half. Leave the open jumping attached to the T-bar half of the clasp. Add another open jumping to the small loop at the base of the hoop shaped half of the clasp.

5 Pick up one end of the chain and hook the end link onto the open jumping on the T-bar

part of the clasp, then using both the flat nose and round nose pliers close the jump ring again. Attach the other end of the chain to the open jumping on the hoop half of the clasp then close the jumping.

6 Working on one side of your necklace feed a crimp bead (small metal tube found in the findings pack) onto the beading thread, then feed the thread through the jumping on one side of your clasp. Bend the thread over and pass it back through the crimp bead then pull the thread tight so the beads and the clasp are as close as possible.

7 Use your flat nose pliers to flatten the crimp and secure your clasp. Using the cutters, trim the excess beading thread as close to the crimp as possible. Repeat step 6 on the other side of your beading thread to attach the second half of the clasp to the necklace.